

Eikon™ - Single gas recyclable personal monitor



Tough and rugged Eikon™ is the durable single gas fixed life personal monitor that really lasts the course.

Features

- Loud & Clear Alarms** - Four multi- angled LEDs give maximum visibility
- Highly audible alarm, 94dBA at 30 cm
- Easy & Safe to Use** - Cannot be turned off accidentally
- End of life indication
- Lightweight & Rugged** - Water and dust protected to IP65 and high chemical resistance
- Dust filters are easily replaceable on site

Technical Specifications

Measuring ranges and alarm settings

	Range	Alarm
Hydrogen sulphide	0-50ppm	5ppm
Carbon Monoxide	0-500ppm	30ppm
Oxygen	0-25%w	19.5%w

- Typical alarm response time** : 5 seconds
- Unit life** : 2 years
- Audible alarm** : 94dBa at 30cm (85dBA at 1m)
- Visible alarm** : 4 multi-angled red LEDs
- Display** : None
- On indication** : Green LED flashes every fifteen seconds
- Ingress protection** : IP65

Ref. No : CR06 B001
Model : Eikon

Applications

- Hydrogen Sulphide**
Offshore Oil & Gas
Petroleum refining and processing
Gas Terminals
- Carbon Monoxide**
Steel processing & manufacture
Shipping (turbines)
- Oxygen**
Marine
Laboratories using liquid Nitrogen
Breweries/Soft Drinks
HVAC
Refrigeration

Gasman II- Personal Monitors for oxygen, toxic and flammable gas



Ref. No : CR06 B002
Model : Gasman II

Gasman II is the single gas monitor that you can rely on. It is light and comfortable to wear but tough enough to withstand the harshest conditions.

Technical Specifications

Typical Measuring ranges and alarm settings	Range	Alarm
Methane	0-100% LEL	20% LEL
Hydrogen Sulphide	0-50, 0-100, 0-250ppm	5ppm
Carbon Monoxide	0-500ppm	30ppm
Sulphur Dioxide	0-10ppm	2ppm
Chlorine	0-5ppm	0-.5ppm
Nitrogen Dioxide	0-10ppm	2ppm
Phosphine	0-5ppm	0.5ppm
Ammonia	0-50ppm	25ppm
Hydrogen Cyanide	0-25ppm	10ppm
Hydrogen (non-flammable level)	0-999ppm	100ppm
Oxygen	0-25%	19% & 23%

Up to levels of alarm are available for each unit.
Further toxic gas ranges available.

Typical response times T90		
Methane	20 seconds	
Oxygen	10 seconds	
Typical Toxic Gas	20 seconds	
Expected sensor life	Flammable	5 years
Toxic	3 years	
Oxygen	1 year minimum	

- Audible alarms** : 85 dBA at 1m
- Visible alarms** : Ultra bright flashing red LED pair
- Datalogging** : Adjustable sample rate,
30-3000 hours @ 1 minute Sample rate
(depending on gas concentration)
- Ingress protection** : IP66



Gasman - Personal Monitors for oxygen, toxic and flammable gas



Ref. No : CR06 B008
Model : Spygas

Gasman is small, light, and simple to use providing comprehensive warning of hazardous gas conditions.

Features

Simple:

- True one button operation
- Easy to read LCD display with backlight
- Clear indication of operation status
- 30 days advance calibration due warning

Assurance:

- 95dBA audible alarm
- Striking twin red/blue visual alarm
- Internal vibration alarm
- 2 levels of instantaneous alarm
- Time weighted average alarms for toxic versions

Robust:

- Tough polycarbonate housing
- Full elastomeric overmoulding
- High impact resistance
- IP65 and IP67 compliant

Flexible:

- Fully interchangeable i-module sensors
- Flammable toxic and oxygen sensors available
- Rechargeable version for all gas types
- Dry cell versions for toxics and oxygen
- Data and event logging

Technical Specifications

Available gases and ranges	Range	Alarm UK and ROW	Alarm US
Flammable	0-100% LEL	20% LEL	10%LEL
Oxygen	0-25%	19/23.5%	19.5/23.5%
Hydrogen Sulphide	0-50ppm	5ppm	10ppm
Carbon Monoxide	0-500ppm	30ppm	35ppm
Sulphur Dioxide	0-10ppm	1ppm	2ppm
Chlorine	0-5ppm	0.5ppm	0.5ppm
Nitrogen Dioxide	0-10ppm	1ppm	3ppm
Ammonia	0-50ppm	25ppm	25ppm
Ozone	0-1ppm	0.1ppm	0.1ppm
Hydrogen	0-1000ppm	N/A	N/A
Hydrogen Cyanide	0-25ppm	5ppm	5ppm
Hydrogen Chloride	0-10ppm	1ppm	1ppm
Hydrogen Fluoride	0-10ppm	1ppm	1ppm
Phosphine	0-2ppm	0.2ppm	0.2ppm
Ethylene Oxide	0-10ppm	5ppm	5ppm

Other ranges and alarm levels are available on request.

Dimensions : 90x48x24mm HxWxD

Typical response times : Flammable 20s, Toxic gas 20s, Oxygen 10s

PC Interface : RS232

900 hours storage at 1 minute interval.

5000+ capacity event logging.

Sampling : Optional manual aspirator

Tetra- Personal Multigas Monitors for oxygen, toxic and flammable gas



Ref. No : CR06 B003
Model : Tetra

Single button operation and intelligent sensor modules guarantee simplicity and flexibility of use. The shockproof internal construction and self checking software assure reliable gas detection in the most arduous of environments.

Technical Specifications

Gas	Range	Alarm UK and ROW	Alarm US
Flammable	0-100%LEL	20%LEL	10%LEL
Oxygen	0-25%	19/23.5%	19.5/23.5%
Hydrogen Sulphide	0-50ppm	5ppm	10ppm
Carbon Monoxide	0-500ppm	30ppm	35ppm
Sulphur Dioxide	0-10ppm	2ppm	2ppm
Chlorine	0-5ppm	0.5ppm	0.5ppm
Nitrogen Dioxide	0-10ppm	3ppm	3ppm
Nitric Oxide	0-100ppm	25ppm	25ppm
Ammonia	0-50ppm	25ppm	25ppm
Ozone	0-1ppm	0.1ppm	0.1ppm
Hydrogen	0-1000ppm	N/A	N/A
Hydrogen Cyanide	0-25ppm	5ppm	5ppm
Hydrogen Chloride	0-10ppm	1ppm	1ppm
Hydrogen Fluoride	0-10ppm	1ppm	1ppm
Phosphine	0-2ppm	0.2ppm	0.2ppm
Ethylene Oxide	0-10ppm	5ppm	5ppm

Other ranges and alarm levels are available on request. Each gas channel can have two instantaneous alarm levels set. Toxic channels also have Time Weighted Average alarms.

- Typical response times** : Flammable 20 s, Toxic gas 20 s, Oxygen 10s
- Audible Alarms** : 90dBA @ 30cm (1ft)
- Visible Alarms, Vibrating alarm**
- Display** : Simultaneous display for all gas channels
- Display Mode** : Continuous real time. Peak readings and TWA
- Datalogging** : Event logging
- Sampling** : Hand aspirator or internal electric sampling pump
- Ingress Protection** : IP65
- PC Interface** : IR link for RS232 connection
- Autocalibrator** : Tetra can be routinely calibrated using Autocalibrator II

Triple Plus + IR - Portable Multigas Monitors for flammable hydrocarbons, oxygen and toxic gases



Features

- Infrared hydrocarbon sensor benefits
- Volume % measurement for purging applications
- % LEL measurement in the air or inert background
- No sensor burnout at high concentration
- Fail safe
- Long sensor lifetime - reduced cost of maintenance

Ref. No : CR06 B004
Model : Triple Plus+IR

Technical Specifications

Ranges and alarms : Up to three levels of alarm are available per channels. Flammable Gas can be supplied as a single range 0-100% LEL or as a dual range 0-100% LEL/0-100% volume which then occupies two channels. Triple Plus + IR can have up to four channels.

	Range	Alarm
Oxygen	0-25%	19%/23.5%
Hydrogen sulphide	0-50ppm	5ppm
Carbon Monoxide	0-500ppm	30ppm
Sulphur dioxide	0-10ppm	2ppm
Chlorine	0-5ppm	0.5ppm
Ammonia	0-50ppm	25ppm
Flammable Gas	0-100%	20% LEL
Flammable Gas	0-100% volume	No alarm

Flammable Gas calibrations are available for methane, propane, butane or ethylene.

- Typical response times** : Methane 30 s, Oxygen 10 s, Typical Toxic Gas 20 s
- Expected sensor life** : Flammable 5 years, Toxic 3 years, Oxygen 2 years
- Audible alarms, Visible alarms**
- Display** : Values and units for up to 4 gases displayed simultaneously at current, TWA pr peak levels.
- Datalogging** : Adjustable sample rate, 100 hours @ 1 minute sample rate (maximum 6000 data points per channel), logging of events, user and site.
- Electric pump** : Optional internal pump with on/off button
- Ingress protection** : IP65
- PC Interface** : RS232 serial

Detective - Transportable Multi-gas monitor



Is the solution to all your temporary area and fence protection needs. Used singly or linked together, Detective gives a loud and clear alarm providing effective warning of gas hazards on an area basis. The rugged water and impact resistant design and clear information display make Detective the ideal choice for your transportable gas detection needs.

Technical Specifications

Typical Measuring ranges and alarm settings (up to four gas measurement channels)	Standard Range	Typical Alarm Levels
Flammable gas	0-100% LEL	20% LEL
Oxygen	0-25%	19% & 23%
Hydrogen Sulphide	0-50ppm	10ppm
Carbon Monoxide	0-500ppm	35ppm
Sulphur Dioxide	0-10ppm	2ppm
Chlorine	0-5ppm	0.5ppm
Nitrogen Dioxide	0-10ppm	2ppm
Phosphine	0-5ppm	0.5ppm
Ammonia	0-50ppm	25ppm
Hydrogen (Non-flammable level)	0-2000ppm	-
Hydrogen Cyanide	0-25ppm	10ppm
Hydrogen Chloride	0-10ppm	5ppm
Ozone	0-1ppm	0.5ppm

Other sensors, ranges and alarm levels available

GAS ANALYSIS / DETECTION

Gas Detector



Linked Detective

Ref. No : CR06 B005
Model : Detective

Typical response times	: Methane 20 s, Oxygen 10 s, Typical Toxic Gas 20 s
Expected sensor life	: Flammable 5 years, Toxic 3 years, Oxygen 2 years minimum.
Audible alarms, Visible alarms	
Display	: Values and units for up to 4 gases displayed simultaneously at current, TWA or peak levels.
Datalogging	: Adjustable sample rate, 100 hours @ 1 minute sample rate (maximum 6000 data points per channel)
Ingress protection	: IP65
PC Interface	: RS232
Autocalibrator	: Detective can be routinely calibrated quickly and simply using Autocalibrator.

Spygas - Flammable Gas Leak Detector



Ref. No : CR06 B006
Model : Spygas

Technical Specifications

Sensor	: Semi-conductor gas sensor - 5 years life span
Detection range	: 50 - 10 000ppm+ for methane
Display	: LCD with nominal 100, 1000 and 10 000 ppm indicators
Back-light	: Automatically back-light on when ambient light levels are low
Audio signal	: Increasing in pitch and intensity proportional to gas concentration
Response time	: Less than 5 seconds
Zeroing	: Automatic, microprocessor controlled
Detectable gases	: Natural gas, methane, ethane, propane, butane, LPG

Spygas CO - Carbon Monoxide Gas Leak Detector



Ref. No : CR06 B007
Model : Spygas CO

The Spygas CO is designed to provide easy access for hard to reach areas and around pipe work. Usage:

- CO emissions from boilers
- CO emissions from hot air furnaces
- Combustions checks on fires, grills and hobs
- Ambient CO room levels

Features

- Ambient background CO levels over a 15 minute period
- Highest recorded value flashes at end of test (complies with BS7967)
- One touch button operation
- Splash proof

Technical Specifications

Sensor Type	: Carbon Monoxide
Maximum Range	: 10,000ppm (Display 0-999ppm)
Resolution	: 1ppm (up to 999ppm) Above 999ppm, display reverts to "Hi"
Filter Type	: Cross filtered electrochemical
Stabilisation Time	: 20 seconds from power on
Response Time	: Less than 5 seconds
Audible Alarm	: Crescendo up to maximum

Sprint 2000^{xt} - Portable Combustion Analyser



Ref. No : CR06 C001
Model : Sprint 2000

Five Functions in one compact easy to use meter.

- Combustion Analyser
- Differential Manometer
- Differential Thermometer
- CO Build Up Detector
- Gas Leak Detector

Features

- Splash Proof
- Back Lit Display
- High Quality Stainless Steel Probe
- Audible Alarm with Crescendo Warning

Measures

- Selectable Fuel Types
- Gross or Net Efficiency Selection
- CO Room Test with 30 One Minute Readings & logging of Highest Reading
- Optional Hydrocarbon Leak Detector

Pressure

- Positive & Negative Pressure with Differential Measurement

Temperature

- Differential Temperature Measurement with Two Thermocouples
- Outlet, Net and Inlet Temperature Displays
- Logging of 50 Flue Gas Analysis Reports
- Logging of 25 CO Room Test Reports
- Data Output to printer or PC

Technical Specifications

Fuels : Natural gas, LPG, light oil, heavy oil + other (specified)

Standard efficiency probe : Pistol grip; 250mm(10") probe length;2500mm(10") hose length

K-type thermocouple (800°C) : Accuracy +/- 0.3%;



Gases	Range	Resolution	Accuracy
Oxygen	0-25%	0.1%	+/-0.3%
Carbon Monoxide	0-10,000ppm	+/-1ppm	<100ppm; +/-5pm
Carbon Monoxide (calculated)	0-25%		>100ppm; +/-5%
CO/CO ₂ ratio	0-0.9999		
Combustion efficiency	0-100%		
Gas leak sensor (option)	20-10,000ppm		

Draught/pressure measurement

Scales : mbar, inWG, mmWG, PSI

Range : +/- 100mbar

Resolution : 0.01mbar

Accuracy : +/-0.5% fsd

Timer : Timer count up from zero for gas soundness/tightness test, specific report generation in accordance to IGE/UP/1B

Flue Gas Analyser



Ref. No
CR06 C002
CR06 C003

Model
Tempest 50
Tempest 100

Tempest 50 is the fast and economical way to measure the composition of boiler flue emissions. Tempest 100 is one of the most powerful portable combustion analysers capable of multi gas emission analysis, differential pressure and temperature measurement.

Features

- Selectable Fuel Types
- Gross or Net Efficiency Selection
- Temperature**
 - Differential Thermocouple with Two Thermocouples
 - Outlet, Net and Inlet Temperature Displays
 - Splash Proof
 - Back Lit Display
 - High Quality Stainless Steel Probe

Pressure

- Positive & Negative Pressure with Differential Measurement
- Logging of 75/Tempest100, 100/Tempest 50 Flue Gas Analysis Reports
- Built in Printer
- RS232 and Parallel Data Ports

GAS ANALYSIS / DETECTION

Flue Gas / Combustion Analyser

Technical Specifications

Fuels : Natural gas, light oil, heavy oil, propane, butane, coal, coke

Probes : Pistol grip; 300mm/Tempest 100, 250mm/Tempest 50
Stainless steel probe length; 2500mm hose length

K-type thermocouple (800°C) : Accuracy +/-0.3%;

Options : High Temperature to 1100°C, 1m insertion length

Gases	Range	Resolution	Accuracy
Oxygen	0-25%	0.1%	+/-0.3%
Carbon Monoxide	0-10,000ppm	+/- 1ppm	<100ppm; +/-5ppm, >100ppm; +/-5%
Nitric Oxide (Tempest 100)	0-1,000ppm	+/-1ppm	<100ppm; +/-5ppm, >100ppm; +/-5%
Carbon Dioxide (calculated)	0-25%		
CO/CO ₂ ratio	0-0.9999		
Combustion efficiency	0.100%		
Gas leak sensor (option)	20-10,000ppm		
Option with NO sensor	0-1,000ppm		
Optional Sensors (Tempest 100)			
Nitrogen Dioxide	0-200ppm	+/- 1ppm	<20ppm; +/-2ppm, >20ppm; +/-5%
Sulphur Dioxide	0-2,000ppm	+/- 1ppm	<100ppm; +/-5ppm, >100ppm; +/-5%
Hydrogen Sulphide	0-200ppm	+/- 1ppm	<40ppm; +/-2ppm, >40ppm; +/-5%
Hydrogen Chloride	0-50ppm	+/- 1ppm	<40ppm; +/-5ppm, >40ppm; +/-5%
High Capacity Carbon Monoxide (in lieu of standard)	0-10,000ppm	+/- 1ppm	<100ppm; +/-5ppm, >100ppm; +/-5%

Draught/pressure measurement

Range : ±150mbar

Resolution : 0.01mbar

Accuracy : ± 0.5% fsd measured at 50mbar

Gas-Tec



A well proven portable FID (flame ionisation leak detector). Highly sensitive to hydrocarbon gases at low levels

Gases : Total hydrocarbons

Features

- Dual range
- High stability
- Visual and audio signal
- Cost effective in operation
- Range 1 - 10,000 ppm
- Range extender up to 100,000 ppm
- Trigger survey kit (optional)
- Quick response (less than 2 seconds) and recovery time
- Reliable
- Extendable probe

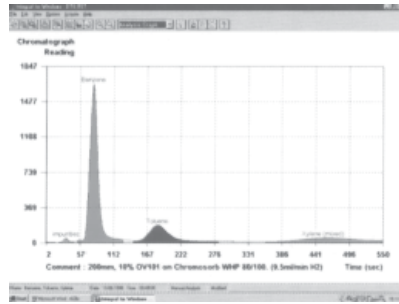
Ref. No : CR06 C004

Model : Gas-Tec

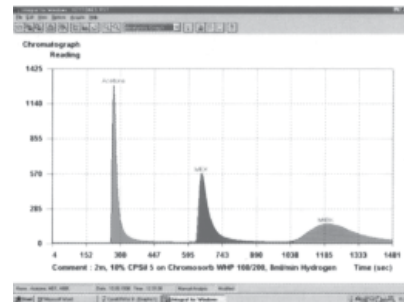
Autofim II/GC



Ref. No **Model**
CR06 C005 **Autofim II**
CR06 C006 **Autofim II GC**



Benzene, toluene & xylene



Ketones

Intrinsically safe (EEx ib IIC T4, EEX d IIC TA) Flame Ionisation Detector, for the fast detection of Volatile Organic Compounds in ambient conditions.

Gases :

- Volatile Organic Compounds
- Natural gas

Features

- Proven industrial history
- Portable
- Extendable probe
- Fast response time less than 3 seconds
- Range 0.1 - 10,000 ppm
- Extended range up to 50,000 ppm (optional)
- Audible signal increasing in pitch with increasing concentration
- Acoustic earphones (IS requirements) for noisy environments
- Portable gas chromatography (optional)

Viper



Ref. No : CR06 C007
Model : Viper

Intrinsically Safe (EEX ia IIC T4) Photo Ionisation Detector

Gases :

- Volatile Organic Compounds
- Ammonia
- Hydrogen Sulphide

Features

- ppb, ppm, mg/m3 measurement
- 10 ppb to 1000 ppm range
- Pre-programmed response factors for up to 250 gases
- Fast response time, less than 1 second
- Alarm levels set by user
- Health & Safety mode - preset TWA, STEL alarms from EH40 (set by Health & Safety Executive)
- Active calculation of STEL & TWA levels
- **Choice of 3 ultraviolet lamps - semi selective, better resolution, expands detection limits**